

# Installation Instruction

(New Benz E Class 2017+)

## Precautions

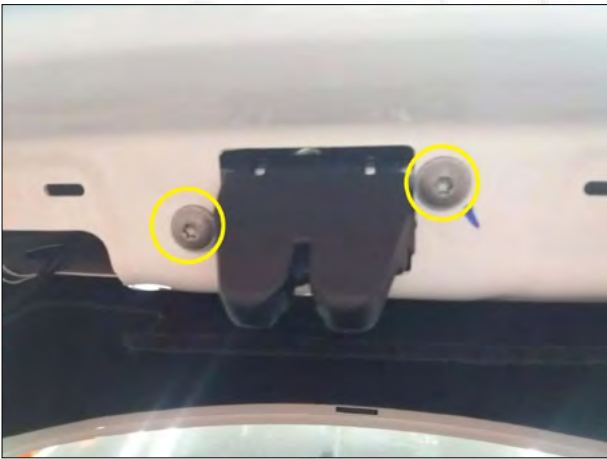
- All pictures in this manual are for reference only. Pictures and objects may differ, but the installation method is the same.
- In order to facilitate your installation, please carefully read the product manual before installation; When installing, protect your car's surface and avoid scratching.
- Please check regularly if all accessories connected with the car are loose to ensure safety.

## Installation Steps

Refer to the parts list and accessory drawings to check if the accessories are complete. After the product is installed, press the tailgate button for 3-5 seconds. You will hear a sound "DI——" and then loose your hand. Press the tailgate button again and close it. You will hear two sounds. Tail gate learning is finished.



1. As shown in the figure, remove the button at the tailgate.



2. After removing the tailgate trim panel, remove the screw and the door lock (As shown in the figure).



3. Remove the button and trim panel.



4. Remove the buckle from the tailgate and remove the cover.

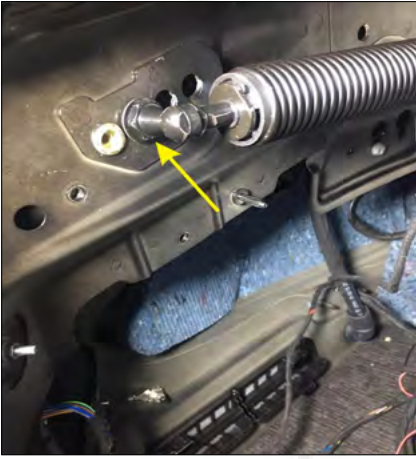


5. Unpack the left and right sides of the trim panel.



6. Put a rivet on the red mark hole on the left side of the trunk (The left and right steps are the same).





7. Install our ball head as indicated by the arrow.



8. Remove the left spring and take out the spring hook film (The left and right steps are the same)



9. Install our bracket.



10. Install our left brace rod and the brace rod motor is facing the cab.



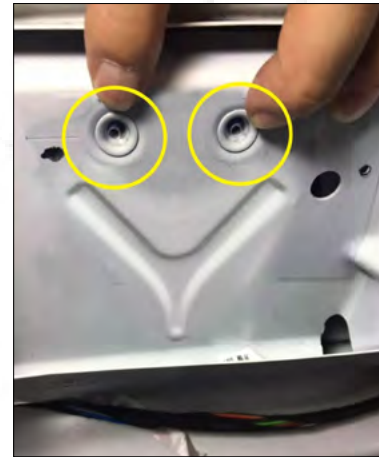
11. Install the ball head as shown by the arrow, the right side of the brace rod motor towards the rear taillights.



12. Install our ball head as shown by the arrow.



13. Install our right side brace rod.

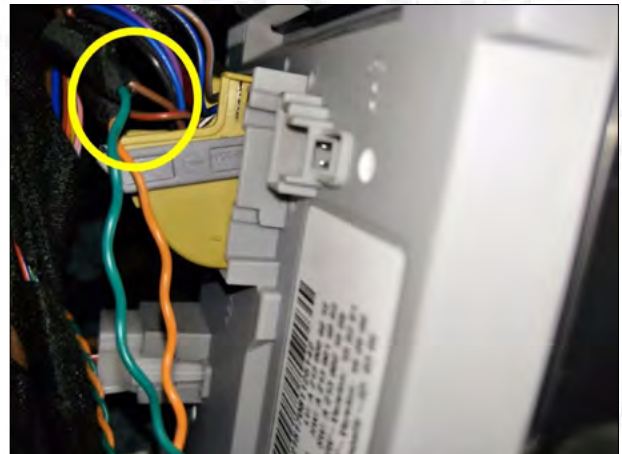


14. Remove the original car lock frame, as shown in the figure, our electric suction lock frame is installed at the position of the yellow circle.



15. Install our electric suction lock and fix it with the original car screws. The motor is installed on the right with our 3M paster.

16. Find the power supply and motor installation position on the right side cover of the tailgate.

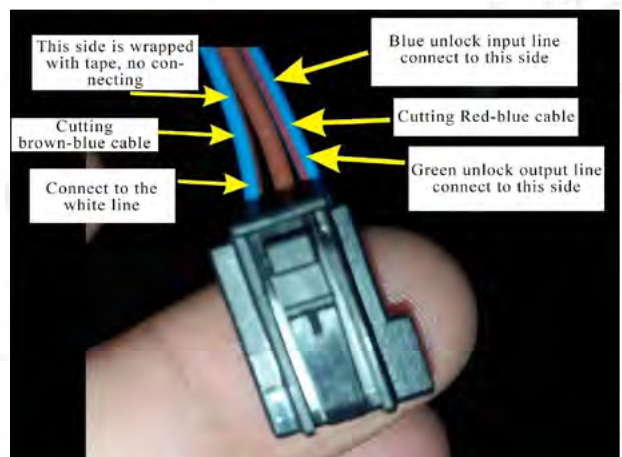


17. Power supply as shown in the figure.

18. Connect the protocol line at the power supply. Our green line connects the original car's brown line. The orange line connects the original car's red-brown line.



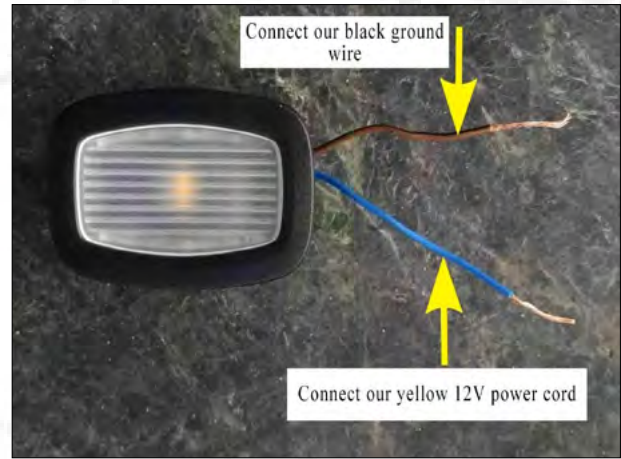
19. Connect the ground wire as shown.



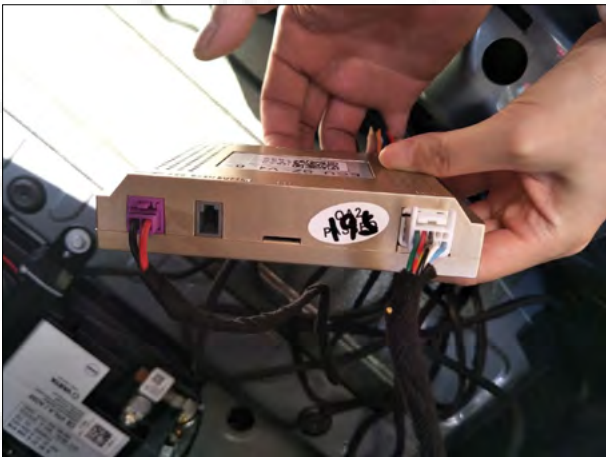
20. Connect the original car unlocking line to the unlocking line of our switch harness. The original car in-place line is connected to the our in-place line.



21. Remove rear taillights as shown.



22. After removing the original taillights, cut off the two lines of the original car. Wrap the other side of the cable which connecting the original car. Wiring method as shown below.



23. Insert the Hall line socket, the power cable socket and the electric suction lock cable socket into the control box, according to the color.



24. Install the central control box and fix it with the screws.



25. Install the tailgate switch button.

After the installation is complete, you must set the tailgate learning. Make sure that the door can be opened and closed in place. (Raise the tailgate to ideal height. Then press the tailgate button for 3-5 seconds. You will hear a sound "DI——" and then loose your hand. Press the tailgate button again and close it. You will hear two sounds "DI DI". Tail gate learing is finished.) If you do not hear two sounds, learning is unsuccessful and you need to re-learn. If you can not close the door, use your hand to push the door to close when you are learning.

## Disclaimer

Due to improper installation and improper use, caused the relevant issues and losses, these not include within our company 's warranty. Thanks for your purchasing our products. Please read the manual carefully before use and collect it for later reference.

## Key Control Method

1. Press the original Key fobs three times to open and close the door.
2. Press the front switch button to open and close the door.

# Setting Height

- 1.Raise the tailgate to the ideal height;
- 2.Press the tailgate switch for 3-5s;
- 3.When you hear a long sound "Di——", loose your hand and press the tailgate switch again to close the door.
- 4.When you hear two sounds "Di Di", Setting height is finished.

**Note: Do not close the door with your hands after setting the ideal height.**

**Be sure to use our own tailgate switch.**

# Fault Solution

The original key fob does not work	Check if the yellowe central control line is connected.
Not working after installation	1.Check if the positive power supply is connected with 12V-16V. 2.Check if the power fuse is inserted. 3.Check if the ground wire is connected.
Closing the tailgate not in place The tailgate can only open to half	1.Check if the left and right bracket are installed reversed. 2.Check if the control box wire is inserted. 3.Check if the brackets are fixed with our screws. 4.There are two rubbers on the left and right sides of the original tailgate cover. Check if they are loose and need to be tightened.



All rights reserved.